

TeaM Cables General Assembly Meeting
6-8 October 2021 - IZFP, Saarbrücken, Germany / online

Wednesday 6th afternoon	Thursday 7th and Friday 8th October
Fraunhofer Institute for Nondestructive Testing IZFP Campus E3 1 66123 Saarbrücken https://www.izfp.fraunhofer.de/en.html	Mercure Hotel Saarbrücken City Hafenstraße 8 66111 Saarbrücken https://all.accor.com/hotel/1307/index.en.shtml



Objectives of the meeting

- Have technical side meetings for some WPs
- Present progress by WP and discuss some technical issues in more detail
- Make decisions and plan the upcoming work in each WP
- Follow-up on the decisions during an Executive Board meeting.

Day 1 – Wednesday 6th October: technical WP meetings and lab visit (IZFP)

Time	Item	Participants
14:00 – 15:00	WP6 technical meeting	EDF, FRA-G
15:00 – 16:00	WP4 technical meeting	EDF, CEA, IZFP, VTT, ENSAM, UNIBO
16:00 – 16:30	<i>Coffee break</i>	
16:30 – 17:30	Lab visit at IZFP	
17:30	End of day 1	

Day 2 – Thursday 7th October: GA meeting (Mercure hotel)

Time	Item	Speaker(s)
09:00-09:15	<i>Arrival and registration</i>	
09:15-09:30	Introduction and roundtable	All
09:30-10:00	WP2 – status and technical discussions	UJV, IRSN, NEXANS, ENSAM
10:00 – 10:15	WP3 – THz measurements: last measurements	IZFP
10:15 – 10:30	WP3 – results coming from space charge and conductivity measurements (flat samples)	UNIBO
10:30 – 10:45	WP3 – Results on swelling tests and SEM observations	IRSN
10:45 – 11:00	WP3 – Last Measurements during accelerated accident post-LOCA simulation	UJV
11:00-11:15	<i>Coffee break</i>	
11:15 – 12:55	WP3 – Conclusion on analysis performed (5 min each)	IRSN, CEA, UJV, INCT, IZFP, VTT, ENSAM, UNIBO
11:55 – 12:05	WP3 – Status of the database	AMU
12:05 – 12:40	WP3 – Final deliverable : contributions and discussion	IRSN, CEA, UJV, INCT, IZFP, VTT, ENSAM, UNIBO, AMU
12:40 – 12:45	WP3 – Conclusions	IRSN
12:45-14:00	<i>Lunch break</i>	

14:00-14:40	Identification of the oxidation products in view of elucidating the radio-thermal oxidation of Si-XLPE	ENSAM
14:40-14:55	Final update on cable and onsite measurements	IZFP
14:55-15:10	Summary on ultrasonic measurements	VTT
15:10-15:25	CEA activities for WP5 on T5.4 and T5.6	CEA
15:25-15:40	Sensitivity analysis of portable device for the evaluation of capacitance and dissipation factor	UNIBO
15:40-16:00	Destructive testing in WP5	UJV
16:00-16:15	<i>Coffee break</i>	
16:15-17:00	WP5 – status of D5.6 and conclusion	VTT, CEA, UJV, IZFP, ENSAM, UNIBO
17:00-18:00	WP6 – status and technical discussions, feedback from end-user workshop	FRA-G, EDF
19:30 – 22:30	<i>Common working dinner in the city centre</i>	

Dinner will be at the **restaurant Ratskeller** in the old town (Rathausplatz 1, 66111 Saarbrücken). Departure at 19:10 from Mercure hotel or meeting directly at the restaurant at 19:30.



Day 3 – Friday 8th October: GA and EB meetings (Mercure hotel)

Time	Item	Speaker
09:00-09:45	WP7 – status and discussions, school organisation	ART, UNIBO
09:45-10:05	WP4 – Multiscale model for the evaluation of polymer electrical properties	UNIBO
10:05-10:25	WP4 – Sensitivity analysis of ageing polymers model- preliminary results	EDF
10:25-10:45	WP4 – Further advances on alcoxy radicals and antioxidants from first principles calculations	CEA
10:45-11:00	<i>Coffee break</i>	
11:00-11:20	WP4 – Mechanical modelling of XLPE-alumina composites with aging effect	VTT
11:20-11:30	WP4 – conclusion	EDF
11:30-12:00	WP1 – progress and discussions	EDF, ART
12:00-12:15	Feedback Technical Advisor	Mattias Hansson
12:15	<i>End of GA meeting – Lunchboxes available</i>	
13:00-14:00	EB meeting	WP leaders only

Information about current restrictions in Germany (subject to change)

[Information on entry restrictions, testing and quarantine regulations in Germany - Federal Foreign Office](#)

In Germany, it is required to wear **either an FFP2 mask or a medical mask** (see picture).



For restaurants and hotels: either you are fully vaccinated (proof per digital or paper certificate, or European certificate) **or you have to do a quick antigen test** (15 min reaction time).

For the **visit at IZFP**: the **same rules** as for restaurants and hotels apply, and you need to fill out a **self-disclosure form**.

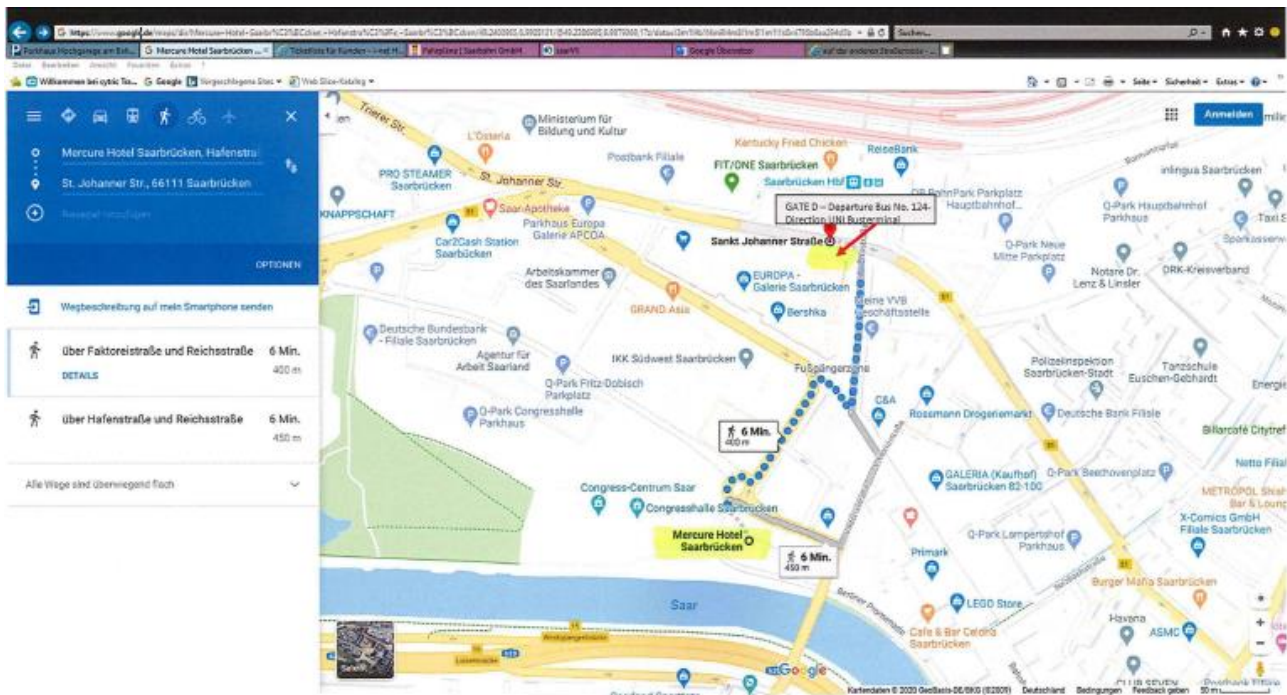
How to get to IZFP from the city centre

The best option to go to IZFP is to take the **Bus No. 124 – direction UNI Busterminal at the train station, bus platform D** (6 min walk from hotel, see map below).

- When coming from the Mercure hotel, the Gate D is on the way to the main train station at the end of the “Europa-Galerie” on the left.
- When coming from the train station, the Gate D is on the right.

The bus ends at the UNI-Busterminal. It is opposite to IZFP. The bus departs every 30 minutes (always at the **full and half hour** – i.e., at 13:00 or 13:30 to arrive at 14:00) and needs 17 minutes to the institute.

For the way back to the main train station you can use the same bus – No. 124 – direction BETRIEBSHOF.



How to get to the Mercure hotel

- By train: DESAA:SAARBRUECKEN/SAARBRUCK (MAIN STATION) At 0.3km / 0.19 miles
- By plane:
 - FRANKFURT RHEIN MAIN At 200km / 125 miles, then ICE train
 - SAARBRUCKEN ENSHEIM At 15km / 9.38 miles, then taxi
 - LUXEMBOURG FINDEL At 100km / 62.5 miles

Accommodation

IZFP recommends to book in one of the following hotels with the **free cancellation option** (it is slightly more expensive but safer):

- [Mercure Hotel Saarbrücken City \(meeting venue\)](#), Price from 86 €
- [B&B Hotel Saarbrücken-Hauptbahnhof](#) – Price from 50 € (500 m to Mercure)
- [IBIS Saarbruecken City Hotel](#) – Price from 60 € (800 m to Mercure)
- [Hotel Stadt Hamburg](#) – Price from 85 € (300 m to Mercure)

