

**TeaM Cables General Assembly Meeting**  
**11-13 March 2020 - IZFP, Saarbrücken, Germany**

<b>Wednesday 11<sup>th</sup> and Thursday 12<sup>th</sup> March</b>	<b>Friday 13<sup>th</sup> March morning</b>
<p><b>Mercure Hotel Saarbrücken City</b>  Hafenstraße 8  66111 Saarbrücken  <a href="https://all.accor.com/hotel/1307/index.en.shtml">https://all.accor.com/hotel/1307/index.en.shtml</a></p>	<p><b>Fraunhofer Institute for Nondestructive Testing IZFP</b>  Campus E3 1  66123 Saarbrücken  <a href="https://www.izfp.fraunhofer.de/en.html">https://www.izfp.fraunhofer.de/en.html</a></p>



## *Objectives of the meeting*

- Present progress by WP and discuss some technical issues in more detail
- Make decisions and plan the upcoming work in each WP
- Follow-up on the decisions during an Executive Board meeting
- Have technical side meetings for some WPs.

## Day 1 – Wednesday 11<sup>th</sup> March: GA meeting (Mercure hotel)

Time	Item	Speaker(s)
09:00-09:15	<i>Arrival and registration</i>	
09:15-09:30	Introduction and roundtable	All
09:30-11:00	WP3 – status and technical discussions (presentation of measurements for each technique and focus on database) – part 1	IRSN, CEA, UJV, NEXANS, INCT, IZFP, VTT, AMU, ENSAM, UNIBO
11:00-11:15	<i>Coffee break</i>	
11:15-12:45	WP3 – status and technical discussions (presentation of measurements for each technique and focus on database) – part 2	IRSN, CEA, UJV, NEXANS, INCT, IZFP, VTT, AMU, ENSAM, UNIBO
12:45-14:00	<i>Lunch</i>	
14:00-16:00	WP5 – status and technical discussions (D5.1-D5.5, focus on applicability on site) – part 1	VTT, CEA, UJV, IZFP, ENSAM, UNIBO
16:00-16:30	<i>Coffee break</i>	
16:30-17:30	WP5 – status and technical discussions (D5.1-D5.5, focus on applicability on site) – part 2	VTT, CEA, UJV, IZFP, ENSAM, UNIBO
19:30 – 22:30	<i>Common dinner at zum Stiefel</i>	

The common dinner will be held at the restaurant “**zum Stiefel**”, Am Stiefel 2, 66111 Saarbrücken (city centre, see map p.4). Meeting at 19:30 at the restaurant.



## Day 2 – Thursday 12<sup>th</sup> March: GA and EB meetings (Mercure hotel)

Time	Item	Speaker
09:00-09:30	WP1 – progress and discussions	EDF, ART
09:30-11:00	WP4 – status and technical discussions (progress of the different models, content of deliverables) – part 1	EDF, CEA, IZFP, VTT, ENSAM, UNIBO
11:00-11:15	<i>Coffee break</i>	
11:15-12:45	WP4 – status and technical discussions (progress of the different models, content of deliverables) – part 2	EDF, CEA, IZFP, VTT, ENSAM, UNIBO
12:45-14:00	<i>Lunch</i>	
14:00-14:30	WP2 – status and technical discussions	UJV, IRSN, NEXANS, ENSAM
14:30-15:30	WP6 – status and technical discussions (focus on abaqus provided by VP and exploitation by Comsy)	FRA-G, EDF
15:30-16:30	WP7 – status and discussions, summer school organisation	ART, UNIBO
16:30-17:00	<i>End of GA meeting - Coffee break</i>	
17:00-18:00	EB meeting	WP leaders only

## Day 3 – Friday 13<sup>th</sup> March morning: lab visit and technical side meetings (IZFP)

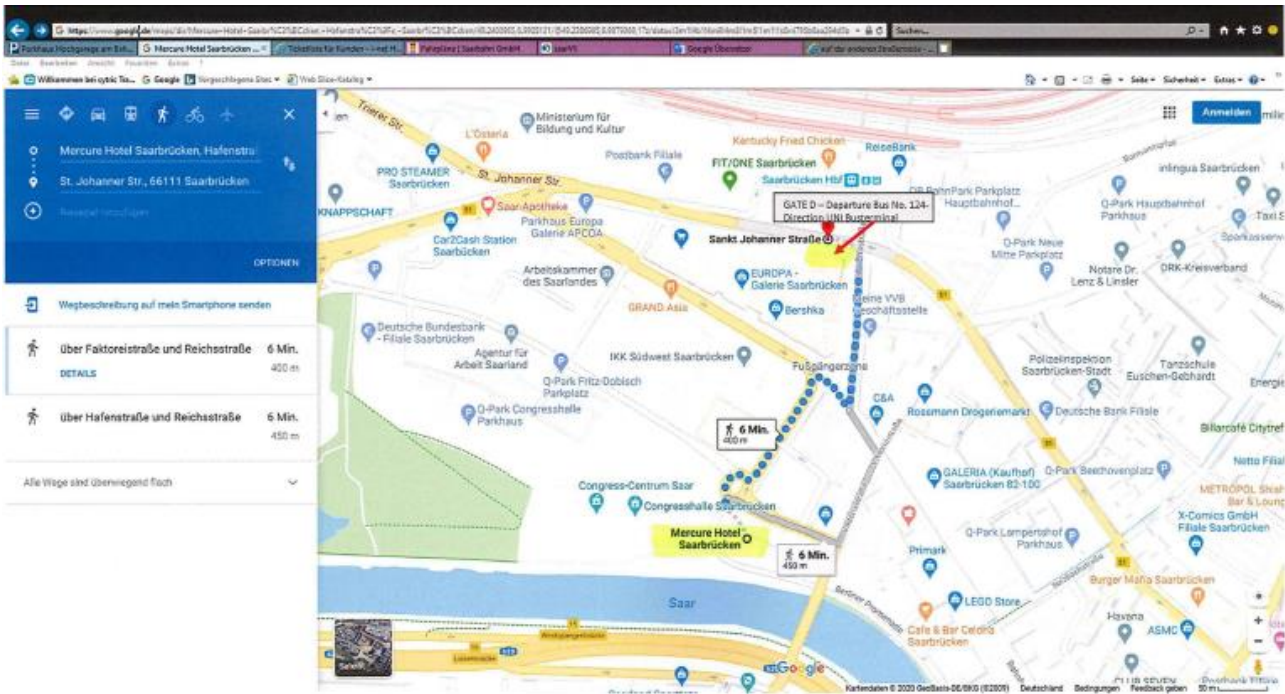
Time	Item	Speaker
08:30 – 09:30	Lab visit at IZFP	
09:30 – 10:30	WP4 technical meeting	EDF
10:30 – 10:45	<i>Coffee break</i>	
10:45 – 11:30	WP6 technical meeting	EDF, FRA-G
11:30 – 12:30	WP3 technical meeting	IRSN, AMU
12:30 – 13:30	<i>Lunch</i>	
13:30	End of meeting	

### *How to get to the Mercure hotel*

- By train: DESAA:SAARBRUECKEN/SAARBRUCK (MAIN STATION) At 0.3km / 0.19 miles
- By plane:
  - FRANKFURT RHEIN MAIN At 200km / 125 miles, then ICE train
  - SAARBRUCKEN ENSHEIM At 15km / 9.38 miles, then taxi
  - LUXEMBOURG FINDEL At 100km / 62.5 miles

*How to get to IZFP from the city centre*

The best option is to take the Bus No. 124 – direction UNI Busterminal at the train station (6 min walk from hotel). The Gate D is on the way to the main train station at the end of the “Europa-Galerie” on the left. The bus ends at the UNI-Busterminal. It is opposite to IZFP.



07:48	Hauptbahnhof, Saarbrücken	Gate D
<b>Bus 124</b> Universität Busterminal		
07:50	HBF SaarLB, Saarbrücken	
07:51	Stadtbad (ehem.), Saarbrücken	
07:53	Haus der Zukunft, Saarbrücken	
07:54	Brauerstr./Fernbusbahnhof, Saarbrücken	
07:56	An der Trift, Saarbrücken	
07:57	Prinzenweiher/DJH, Saarbrücken	
07:59	Waldhaus, Saarbrücken	
08:00	Wildpark, Saarbrücken	
08:01	Landessportschule, Saarbrücken	
08:02	Universität Botanischer Garten, Saarbrücken	
08:03	Universität Campus, Saarbrücken	
08:04	Universität Mensa, Saarbrücken	
08:06	Universität Busterminal, Saarbrücken	H

For the way back to main train station you can use the same bus – No. 124 – direction BETRIEBSHOF.

<b>Montag - Freitag</b>																
<b>124</b>																
<b>Universität Busterminal - Waldhaus - Brauerstraße/Fernbusbahnhof - Hauptbahnhof - Roonstraße - HTW/SWS - Betriebshof</b>																
Haltestellen																
Universität Busterminal H	638	708	738	753	808	823	838	853	920	950	1020	1050	1120	1350	1420	1450
Universität Mensa	640	710	740	755	810	825	840	855	922	952	1022	1052	1122	1352	1422	1452
Universität Campus	642	712	742	757	812	827	842	857	924	954	1024	1054	1124	1354	1424	1454
Uni Botanischer Garten	643	713	743	758	813	828	843	858	925	955	1025	1055	1125	1355	1425	1455
Landessportschule	645	715	745	760	815	830	845	860	927	957	1027	1057	1127	1357	1427	1457
Wildpark	646	716	746	761	816	831	846	861	928	958	1028	1058	1128	1358	1428	1458
Waldhaus	647	717	747	762	817	832	847	862	929	959	1029	1059	1129	1359	1429	1459
Prinzenweiher/Jugendherberge	649	719	749	764	819	834	849	864	931	1001	1031	1101	1131	1401	1431	1501
An der Trift	650	720	750	765	820	835	850	865	932	1002	1032	1102	1132	1402	1432	1502
Brauerstraße/Fernbusbahnhof	653	723	753	768	823	838	853	868	935	1005	1035	1105	1135	1405	1435	1505
Haus der Zukunft B	654	724	754	769	824	839	854	869	936	1006	1036	1106	1136	1406	1436	1506
Stadtbad	655	725	755	770	825	840	855	870	937	1007	1037	1107	1137	1407	1437	1507
Hauptbahnhof C	657	727	757	772	827	842	857	872	939	1009	1039	1109	1139	1409	1439	1509
Triener Straße C	659	729	759	774	829	844	859	874	941	1011	1041	1111	1141	1411	1441	1511
Roonstraße A	703	733	758	773	823	838	848	858	915	1015	1045	1115	1145	1415	1445	1515
HTW / SWS	704	734	759	774	824	839	849	859	916	1016	1046	1116	1146	1416	1446	1516
Betriebshof	705	735	760	775	825	840	855	870	947	1017	1047	1117	1147	1417	1447	1517

**Erläuterungen:**

### Accommodation

IZFP recommends the following hotels to stay:

- [Mercure Hotel Saarbrücken City \(meeting venue\)](#), Price from 80 €
- [FourSide Hotel](#) – Price from 76 € (50 m to Mercure)
- [B&B Hotel Saarbrücken-Hauptbahnhof](#) – Price from 50 € (500 m to Mercure)
- [Hotel Stadt Hamburg](#) – Price from 82 € (300 m to Mercure)
- [IBIS Saarbrücken City Hotel](#) – Price from 60 € (800 m to Mercure)

